

## State of Wyoming Corner Record

(In compliance with the *CORNER PERPETUATION AND FILING ACT*, Wyoming Statutes, 1997, Section 33-29-140, et. seq., and the Rules and Regulations of the Board of Registration for Professional Engineers and Professional Land Surveyors)

Reverse side of this form may be used if more space is needed.

Record of original survey and citation of source of historical information (if corner is lost or obliterated). Description of corner monumentation evidence found and/or monument and accessories established to perpetuate the location of this corner. Sketch of relative location of monument, accessories, and reference points with course and distance to adjacent corner(s) (if determined in this survey). Method and rationale for reestablishment of lost or obliterated corner.

**G.L.O. Record:** U.S. Deputy Surveyor, Edward D. Bright, Sept., 1868; 80.00 Chains....Set boulder 14 x 12 x 7 for cor to secs. 15,16,21,22

**Found:** No. 6 diam. rebar with 2" aluminum cap marked as noted below, 8 ins. out of the ground in a mound of stone.

**Set:** Nothing

**Found Aluminum Cap Markings**

S.D. Dawson

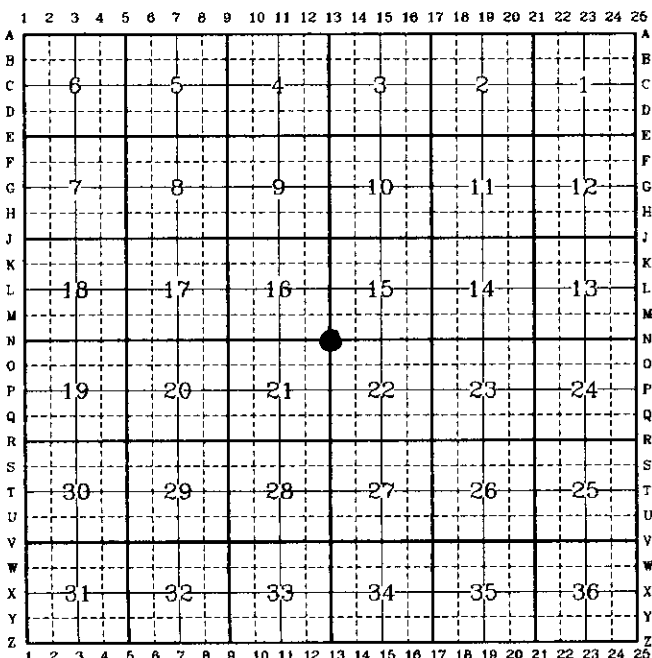
$$\begin{array}{c|c} 16 & 15 \\ \hline 21 & 22 \end{array}$$
 T12N R67W  
 WY. LS 555

See back of this sheet for measurements to other found or set monuments in the area.

Date of Field Work: Dec. 14, 1998

Office Reference: A.V.I. Job No. 2-2085 C

**CROSS INDEX DIAGRAM**

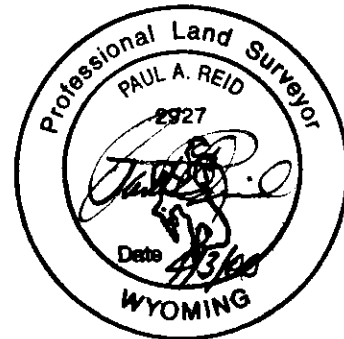


Firm/Agency, Address  
 Paul A. Reid, P.L.S.  
 A.V.I., p.c.  
 2035 Westland Road  
 Cheyenne, WY 82001

Telephone Number:  
 (307) 637-6017

This corner record was prepared by me or under my direction and supervision.

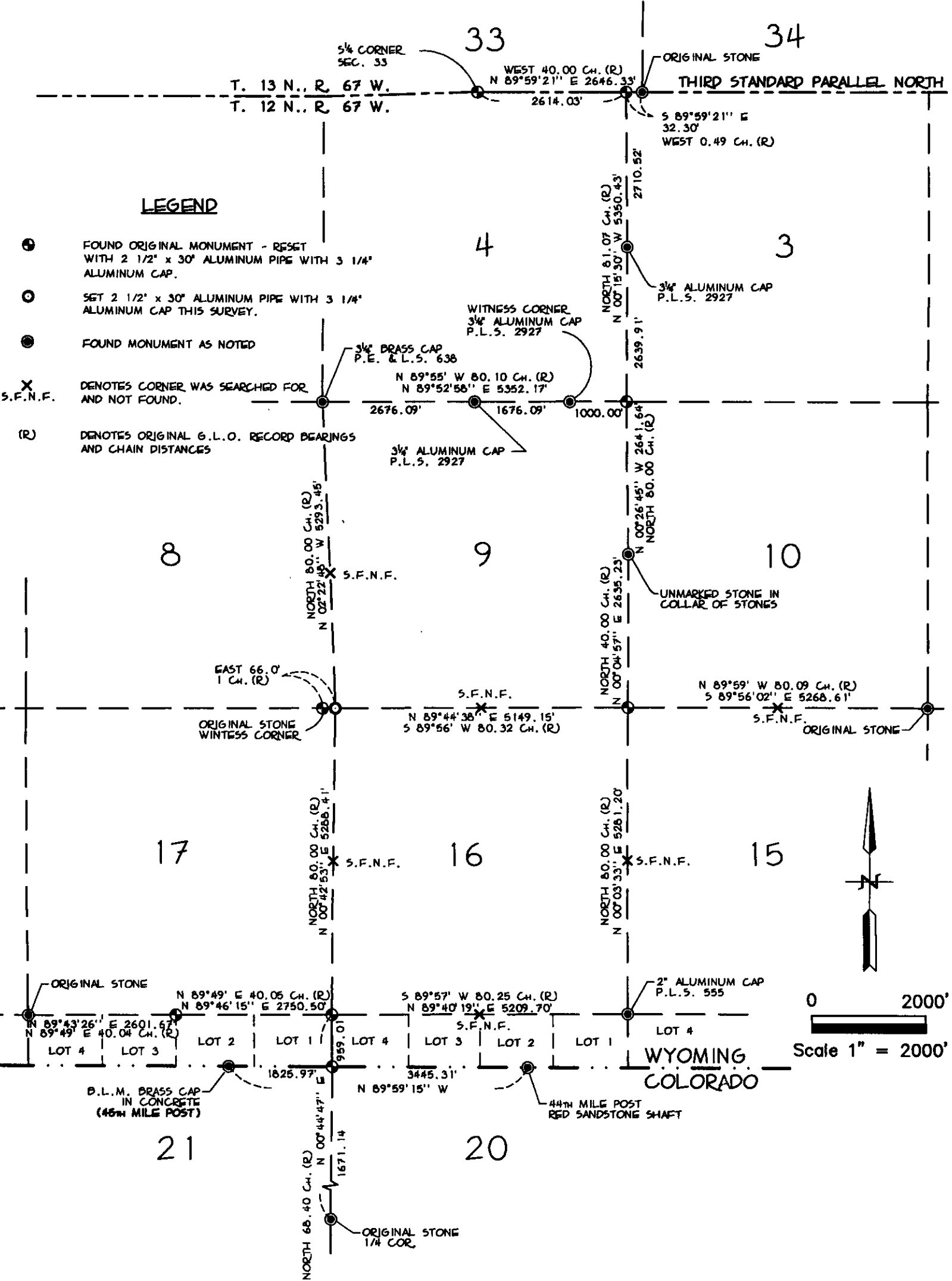
*SEAL & SIGNATURE*



Corner Name: NW  
 SBRPEPLS/PLSW: March 1994

Section: 22

T.12N., R.67W.; 6<sup>th</sup> P.M. Cross-Index No.: N-13



# SKETCH OF SURVEY

T. 12 N., R. 67 W., 6TH P.M.  
LARAMIE COUNTY, WYOMING